

REV. LTR.	DESCRIPTION	SIGN	DATE
	Update drawing	Zhangxiuke	2011.06.13

Ordering information:  
 DC00040-  (1)  (2)  (3)

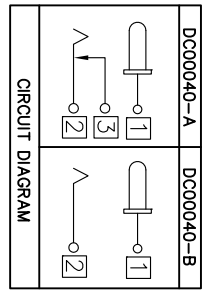
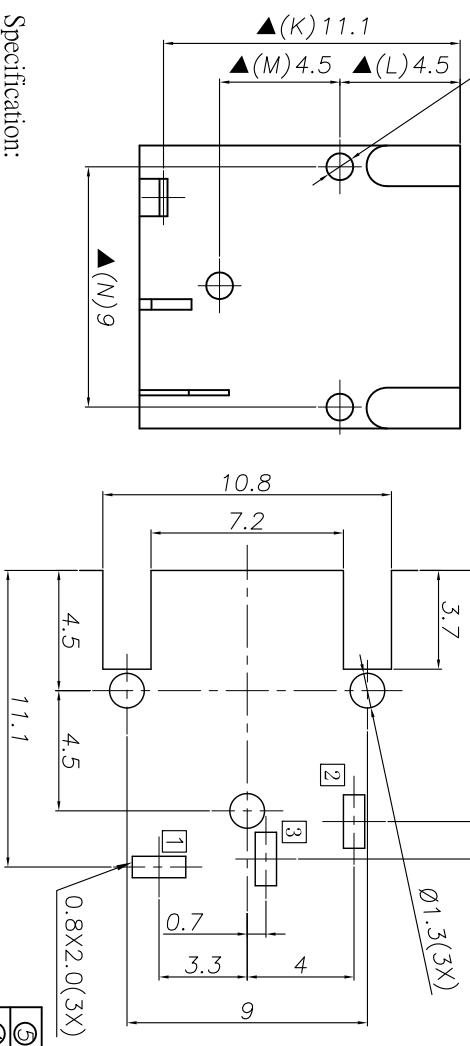
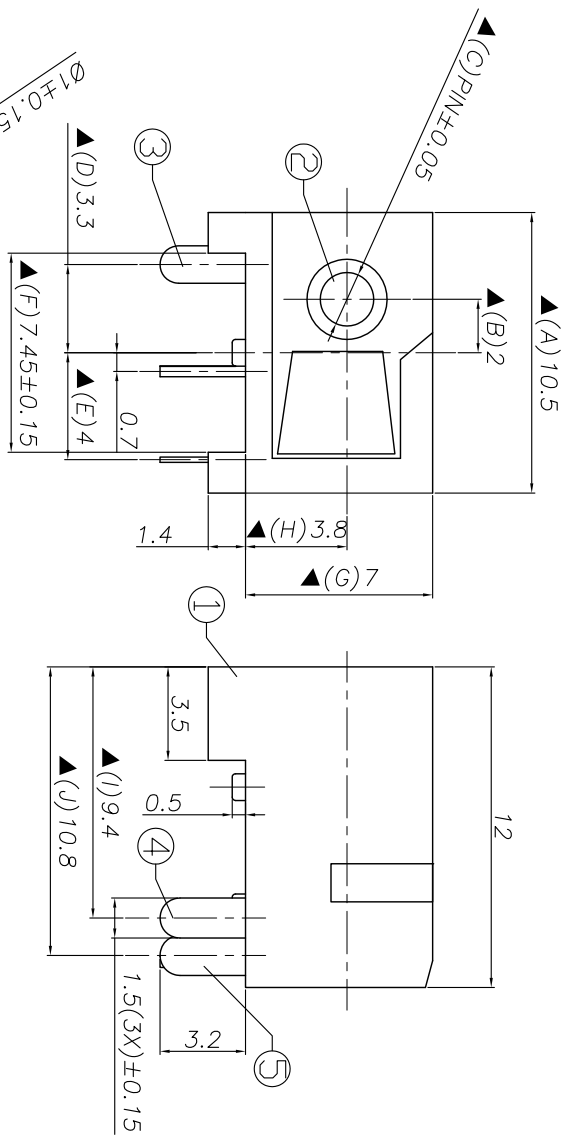
(1): Series No.

(2): Schematic option:  
 A, B

A, B

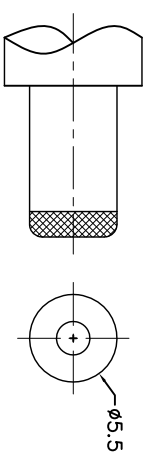
(3): Center pin diameter:

H=Ø2.0 J=Ø2.5



Model No.	DC00040-H	DC00040-J
PIN	Ø2.0	Ø2.5

: TERMINAL NO.



DC MATE PLUG

- Specification:
1. Rating : DC 20V 2A.
  2. Contact resistance : ≤50mΩ.  
After test: ≤100mΩ.
  3. Insulation resistance : ≥100MΩ (DC500V).  
After test: ≥50MΩ.
  4. Withstanding voltage : 500VAC.
  5. Insertion and extraction force : 3N~30N.
  6. life test : 5000cycles min.
  7. Operation temperature range:-20°C~70°C.
  8. Preservative temperature range:-40°C~85°C.
  9. Sign "▲" is importance dimension.

RECOMMENDED P. C. B. LAYOUT  
 UNSPECIFIED TOLERANCE: ±0.05  
 (BOTTOM VIEW)

NO.	DESCRIPTION	QTY	MATERIAL	PLATING	REMARK
①	Housing	1	PBT	DC00040-S1(ST-945)	Black
②	Center pin	1	Copper alloy	DC00040-01(PP-948)	Silver plating
③	Tip spring	1	Stainless steel t0.2	DC00044-02(TP-947)	Silver plating
④	Shunt terminal	1	Brass t0.4	DC00040-03(WP-946)	Silver plating

UNIT:MM	TYPE:	MODEL NO.:	PAPER NO.:	A4	PAGE 1 OF 1
	DC POWER JACK	DC00040-	DC00040-	TOLERANCE	±0.3
				ANGLES	±2°
				SCALE	FULL
				VER	3

DESIGNER BY:	Zhangxiuke	2011.06.13	承永實業有限公司 BLUE SOURCES ELECTRONICS CO.,LTD.
CHECK BY:			
APPROVED BY:			